

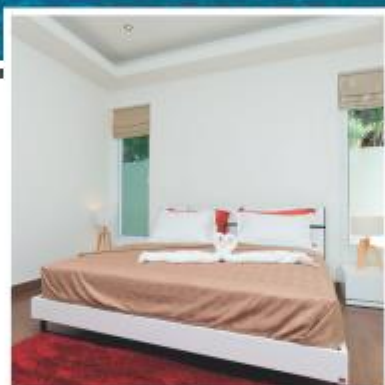
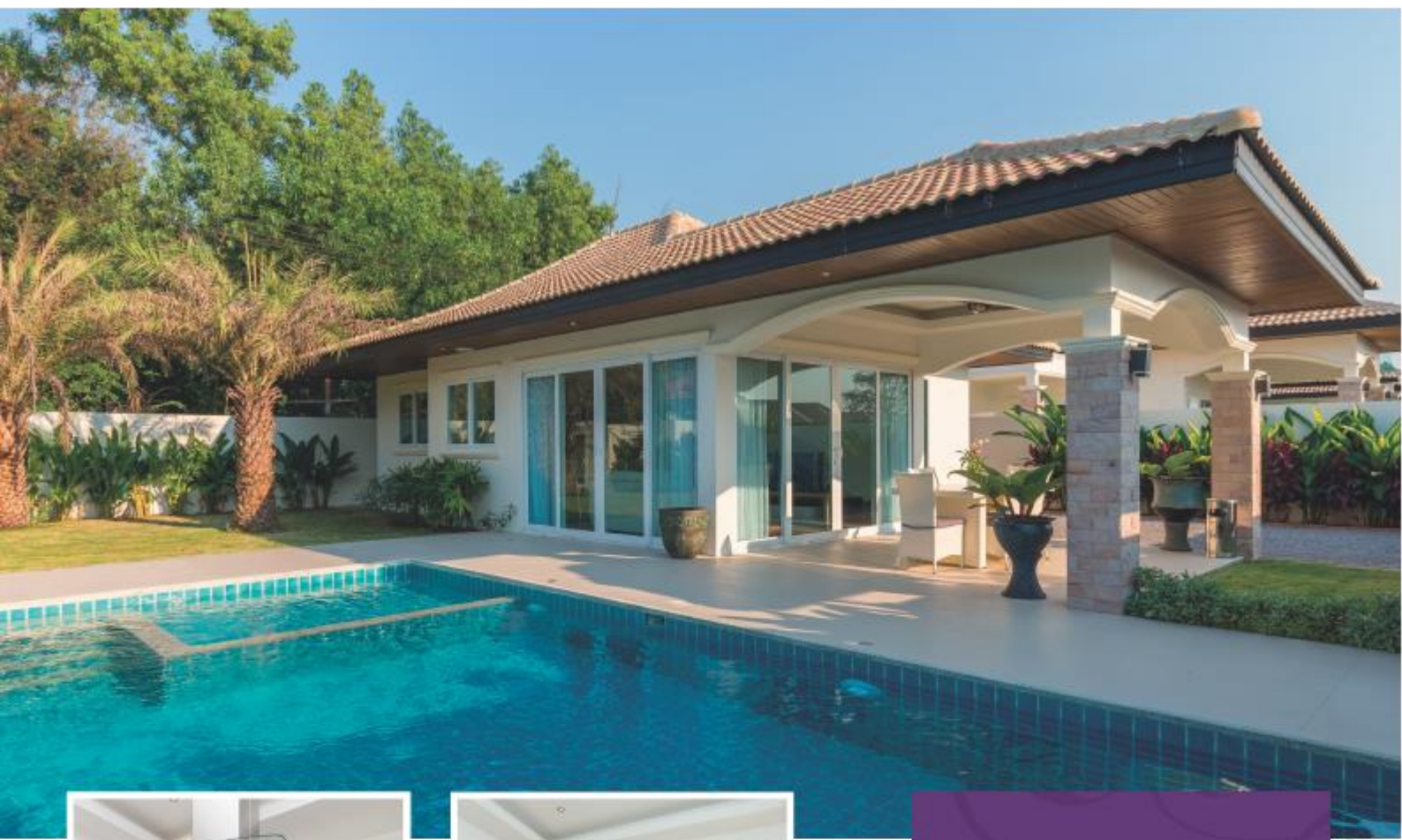
ORCHID

PARADISE HOMES



We offer modern, luxurious tropical villas
affording cutting edge design and functionality.

Prices from 4.390.000,- Baht



VILLA 1

COZY 2 BEDROOM POOL VILLA

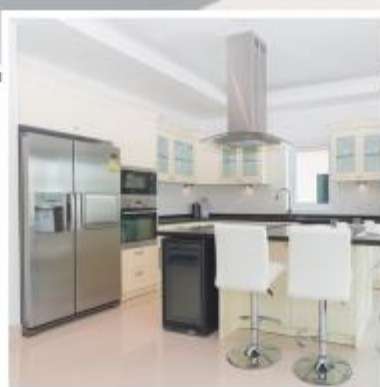
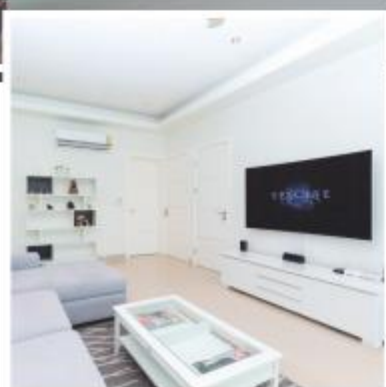
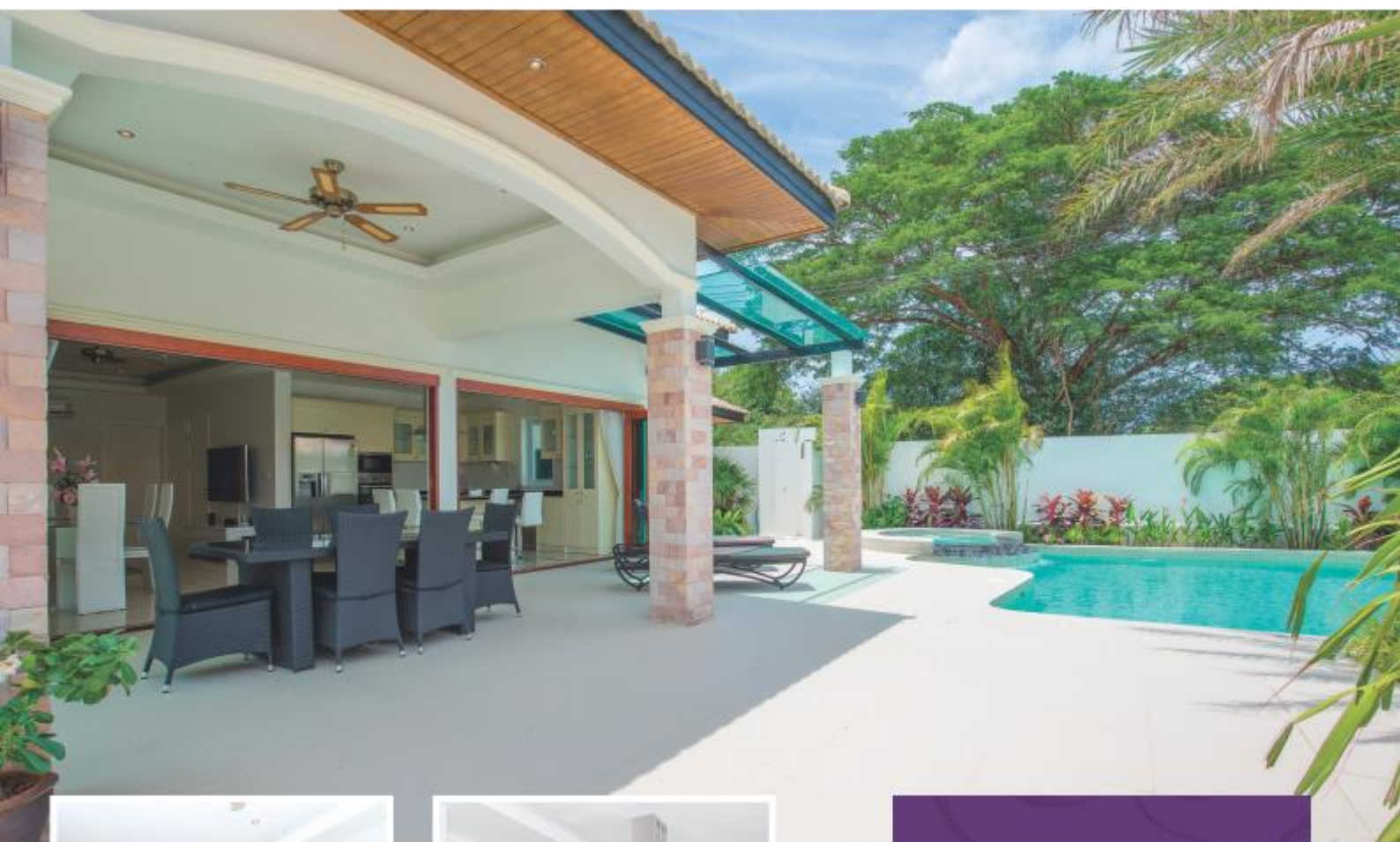
- Living area: 96 sqm.
- 2 Bedroom
- 1 Bathroom
- Land plot from 260 sqm
- 6x3m Pool included

The villa comes with a cozy living room, spacious bedrooms, open kitchen included appliances. Plenty of room for a dining table. Aircondition in all rooms, hot and cold water in all taps and a beautiful garden.

Prices From
4,390,000

All prices are in Thai Bath





VILLA 2 NICE 3 BEDROOM POOL VILLA

- Living area: 129 sqm.
- 3 Bedroom
- 2 Bathroom
- Land plot from 350-900 sqm
- 6x4m Pool included

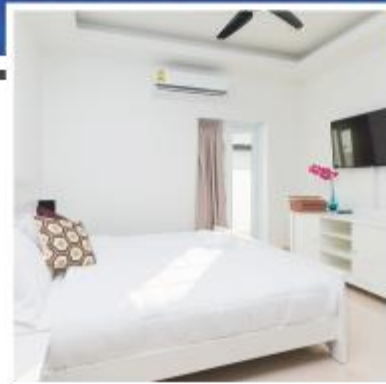
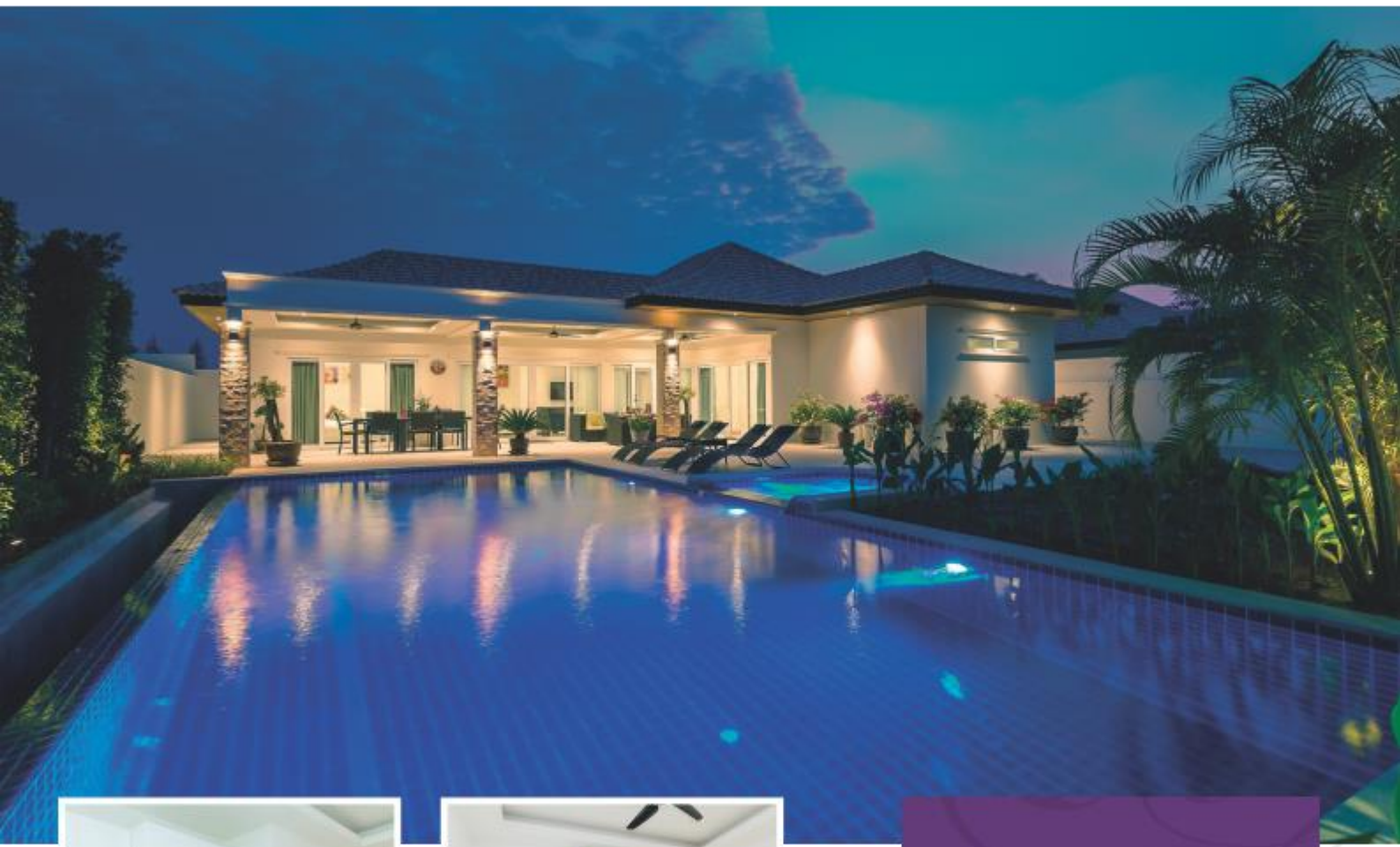
This popular villa comes complete with a European kitchen, included appliances. 3 spacious bedrooms with lots of closet space. Air-condition in all rooms.

Fully equipped roomy bathrooms, tiles on all floors, nice tropical garden and a big terrace to enjoy the tropical evenings.

Prices From
5,490,000

All prices are in Thai Bath





VILLA 3 LARGE 3 BEDROOM POOL VILLA

- Living area: 176 sqm.
- 3 Bedroom
- 2 Bathroom
- Land plot from 400-900 sqm
- 8x4m Pool included

This villa features a large living room with a spacious open kitchen solution and dining room. Generous terrace, partly covered and private carport. European kitchen included appliances.

Air conditions in all rooms, fully furnished large bathrooms, tiles on all floors and a nicely planted tropical garden.

Prices From
7,500,000

All prices are in Thai Bath





Masterplan Orchid Paradise Homes





Orchid Paradise Homes - Pricelist

PLOT	PLOT SQM	PLOT PRICE	Villa 1 3,155,000	Villa 2 3,827,500	Villa 3 5,500,000
OPV 419	253	1 201 750	4 356 750	N/A	N/A
OPV 424	324	1 539 000	4 694 000	N/A	N/A
OPV 427	380	1 805 000	4 960 000	5 632 500	7 305 000
OPV 428	380	1 805 000	4 960 000	5 632 500	7 305 000
OPV 430	321	1 524 750	4 679 750	N/A	N/A
OPV 501	441	2 094 750	5 249 750	5 922 250	7 594 750
OPV 502	400	1 900 000	5 055 000	5 727 500	7 400 000
OPV 503	400	1 900 000	5 055 000	5 727 500	7 400 000
OPV 504	400	1 900 000	5 055 000	5 727 500	7 400 000
OPV 505	400	1 900 000	5 055 000	5 727 500	7 400 000
OPV 506	400	1 900 000	5 055 000	5 727 500	7 400 000
OPV 507	400	1 900 000	5 055 000	5 727 500	7 400 000
OPV 508	400	1 900 000	5 055 000	5 727 500	7 400 000
OPV 509	660	3 135 000	6 290 000	6 962 500	8 635 000
OPV 510	290	1 377 500	4 532 500	5 205 000	6 877 500
OPV 511	370	1 757 500	4 912 500	5 585 000	N/A
OPV 512	580	2 755 000	5 910 000	6 582 500	8 255 000
OPV 513	500	2 375 000	5 530 000	6 202 500	7 875 000
OPV 514	370	1 757 500	4 912 500	5 585 000	N/A
OPV 515	424	2 014 000	5 169 000	5 841 500	7 514 000
OPV 516	360	1 710 000	4 865 000	3 827 860	N/A
OPV 517	310	1 472 500	4 627 500	5 300 000	6 972 500
OPV 518	570	2 707 500	5 862 500	6 535 000	8 207 500
OPV 519	455	2 161 250	5 316 250	5 988 750	7 661 250

All prices in THB, extra land 4 750 THB per sqm, marked **red** is sold



SPECIFICATION AND MATERIAL LIST

Foundation & Structure:	Reinforced concrete
Walls:	14 cm block work walls internal and external, living room and bedrooms are plastered walls with painting and bathroom walls with grade A porcelain tiles and waterproof sealing.
Roof:	Steel structure with CPAC monier roof tile.
Floors:	Grade a porcelain floor tiles with tile moldings
Ceilings:	Custom design UV reflecting gypsum ceilings, Jotun paint, and with LED down Light
Windows:	UPVC with option mosquito net on selected windows
Doors, external:	UPVC with option mosquito net on selected doors
Door, internal:	Modern wooden doors with matt white lacquer finish.
Air-condition:	LG Energy saving DC inverter units in Living room and in all bedrooms.
Ceiling fans:	Indoor and outdoor (optional)
Hot water:	Stiebel central water heater (German brand) for bathrooms and kitchen
Kitchen:	Modern design kitchen, granite worktop, soft close systems on drawers and cabinets, Electrolux appliances, LED lights.
Bathroom/s:	Grohe "German" taps and showers, all fixtures and fittings of European brands.
Storage room:	Storage room prepared for laundry area and storage (Optional)
Roof covered terrace:	Yes with LED down light
Carport:	Covered car park with ceiling lights for some house models
Furniture:	Yes for additional costs
Internet:	Fiber optic connection up 100 Mbit, free Wi-Fi in common areas
Fresh Water Storage Tank:	2000 L
Septic Tank:	1,600 L per bathroom
Electrical Supply:	30 Amp / 3Phase, 220 Volt
Garden:	Tropical Landscape with garden lighting
Swimming Pool:	Customized design, Salt water pool System, Floor glazed Ceramic pool Tiles, Walls glazed Ceramic pool Tiles, under Water Lighting Fixture LED
Jacuzzi:	Optional.
Upgrade Options:	Upon request.
Guarantee:	5 years on structure, 10 years on pool, 1 year on appliances





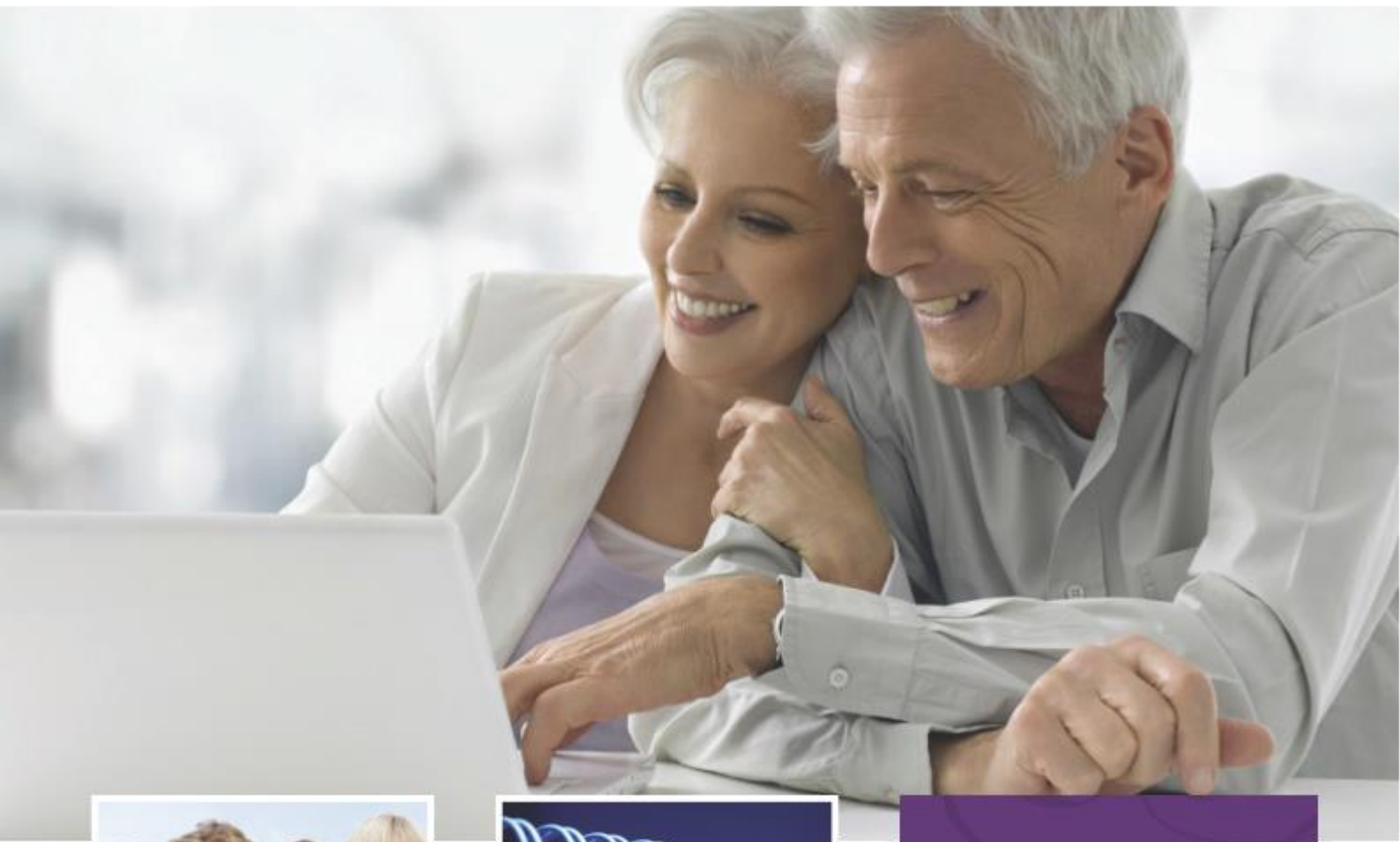
Our popular common pool area

- Big common pool
- Waterslide
- Bar
- Restaurant

In Orchid Villas we emphasize on family fun and good times for both vacationers as well as permanent residents, and for that purpose our common area serves as the heart of our small village, here is always room for kids, and fun around the big pool and waterslide, or a late night get together for the adults around the bar or pool table. Our staff and family is always around to help if needed or to give advise and assistance in trip and tours in and around wonderful Hua Hin.

Orchid Paradise Homes is all about enjoying your holiday and life in Thailand.





Rental management

www.thaivacationhomes.com

Do you wish to rent your house when you are not in Thailand ?

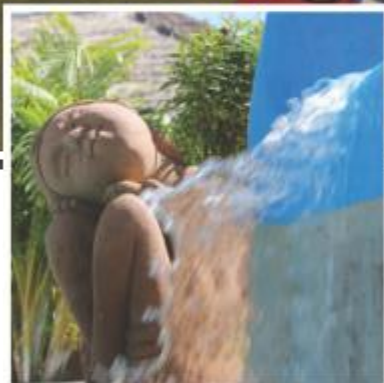
Orchid Paradise offer's efficient rental management and low operating costs whilst maintaining consistently high levels of quality at all times. Our approach is friendly and personalised and we retain close relationships with clients and tenants alike

Orchid Paradise has a very functional and easy manageable rental website dedicated to holiday rentals (www.thaivacationhomes.com) where your house will be listed and promoted, so you just inform the weeks you want to rent out, and Orchid Paradise will take care of the rest, administration, management and maintenance. We answer all the inquiries, confirm bookings, manage check-in / check-out, cleaning etc.

All you have to do is relax and watch while your villa creates a solid revenue for you, while you wait for your next vacation!

We have been successfully managing houses of our happy owners for more than 7 years now.





About Us

Our Dream, Our goal

Welcome to Orchid Paradise, This lovely villa project is located in the mountains close to Hua Hin city center and combines leisure, investment and vacation in perfect harmony, here full time residents and part time vacationers live together as neighbors surrounded by lovely nature and mountains, less than 15 min. from Hua Hin city center and beach.

Orchid Paradise has something for everyone, those who wish to enjoy the privacy and tranquility of their own spacious garden and large pool, or a more lively common area with BBQ, big common pool with water slide, restaurant and bar, Orchid Paradise is very child friendly and provides a great atmosphere for family's with kids. If your in to golf, Hua Hin has more than 10 golf courses and Orchid Paradise is located just 5km from the internationally famous Black Mountain golf course and Water park, where you also have the opportunity to do water skiing and boarding in the brand new cable park.

Orchid Paradise is hard to describe with only words and pictures, the here atmosphere is unique and unpretentious, there is room for kids and fun evenings around the common area.

Our aim is, to provide the perfect villa, a perfect frame for good times and joyous vacations with friends and family, but also to ensure you receive the best service during your holiday stay

We hope to see you here



Welcome to Orchid Paradise Homes



Orchid Paradise Homes is located just 5 km from town. Going to town will take you only 15 minutes with one of the local Tuk-Tuks. Driving to Bangkok via the bypass will take you less than two and a half hours, that is of course if you don't drive during Bangkok rush hours.

Orchid Paradise has reached it's fourth phase and due to popularity and demand the first, second & third phase is completely sold out and fully booked during the holiday period.

Orchid Paradise 3 & 4 is located just behind Orchid Paradise 2. In total 58 Villas will be built on this beautiful site, more than 40 villas sold.

Get your piece of Paradise now.


Ronny Hahn
Developer


Rene Seerup
Developer



CONTACT US

Orchid Paradise Homes
Moo 7, Nong Hiang, HuaHin

Prachuabkhirikhan 77110 Thailand

Call: +66(0) 8 7793 2193

Email:
sales@orchidparadisehomes.com

**VISIT OUR WEBSITE FOR MORE
INFORMATION**

www.orchidparadisehomes.com

